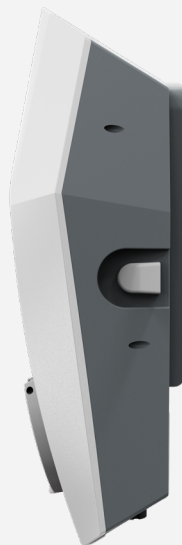




White
RAL9003
(Front)



Basalt
RAL7011
(Front)



Grey
RAL7040
(Rear)



Technical information

Dimensions (HxWxD)

440 x 270 x 140 mm

Weight

±2.5KG (Fixed cable ±5.5KG)

Charging capacity

1-phase or 3-phase, 6-32A (1.4-22kW) (power adjustable via app)*

Charging cable

Type-2 Socket (IEC 62196-2)
Fixed cable Type-2 (6.5m standard)

Communication protocol

OCPP1.6j
REST API integration (via VT Cloud)
MQTT (via VT Cloud)

Interfaces**

RJ45 (Ethernet/LAN)

User interface

App
LED-RGB
Piezo buzzer

Internet connectivity

Ethernet
Optional: GPRS 2G
Optional: LTE-M 4G

Meter

Integrated energy meter (non-MID)
Optional: MID Class B 2014/32/EU certified (<1%)

Net type

TN, TT, IT

Identification

RFID Mifare 13.56 MHz (up to 7-byte)
Autostart
User App & VT Cloud

Power connection

Installation connector (up to 6 mm² solid or stranded, 8-21 mm outer diameter)
Alternative cable entry at rear (up to 10 mm² solid or flexible, 14-21 mm outer diameter, ring terminals or weld terminals required)

Safety

Overcurrent protection according to IEC-61851
Built-in 6mA DC RCM according to IEC-62955
IP54 according to IEC-60529
IK08 according to IEC-62262
Insulation class I
Overvoltage category III

Operating conditions

Temperature -25°C to +40°C
Humidity 5% to 95%

Standby consumption

~2W

Recommended mounting height

1 metre above the ground

Standards

2014/53/EU Radio Equipment Directive
2011/65/EU Restriction of Hazardous Materials
2014/30/EU Electromagnetic Compatibility
2014/35/EU Low Voltage Directive

* The maximum capacity depends on factors such as (but not limited to) local regulations, site capacity, solar panels, temperature and type of cable/car.

** The installer's phone and the product must be connected to the internet for this product to be configured and commissioned.